

RICKIE C. WEINBERG
CARNAHAN-PROCTOR AND ASSOCIATES, INC.
 CONSULTING ENGINEERS
 SURVEYORS ENGINEERS PLANNERS
 6191 WEST ATLANTIC BLVD., MARGATE, FLORIDA 33063
 SEPTEMBER 1996 8706062G JSH

BOCA ISLES SOUTH PHASE 5G

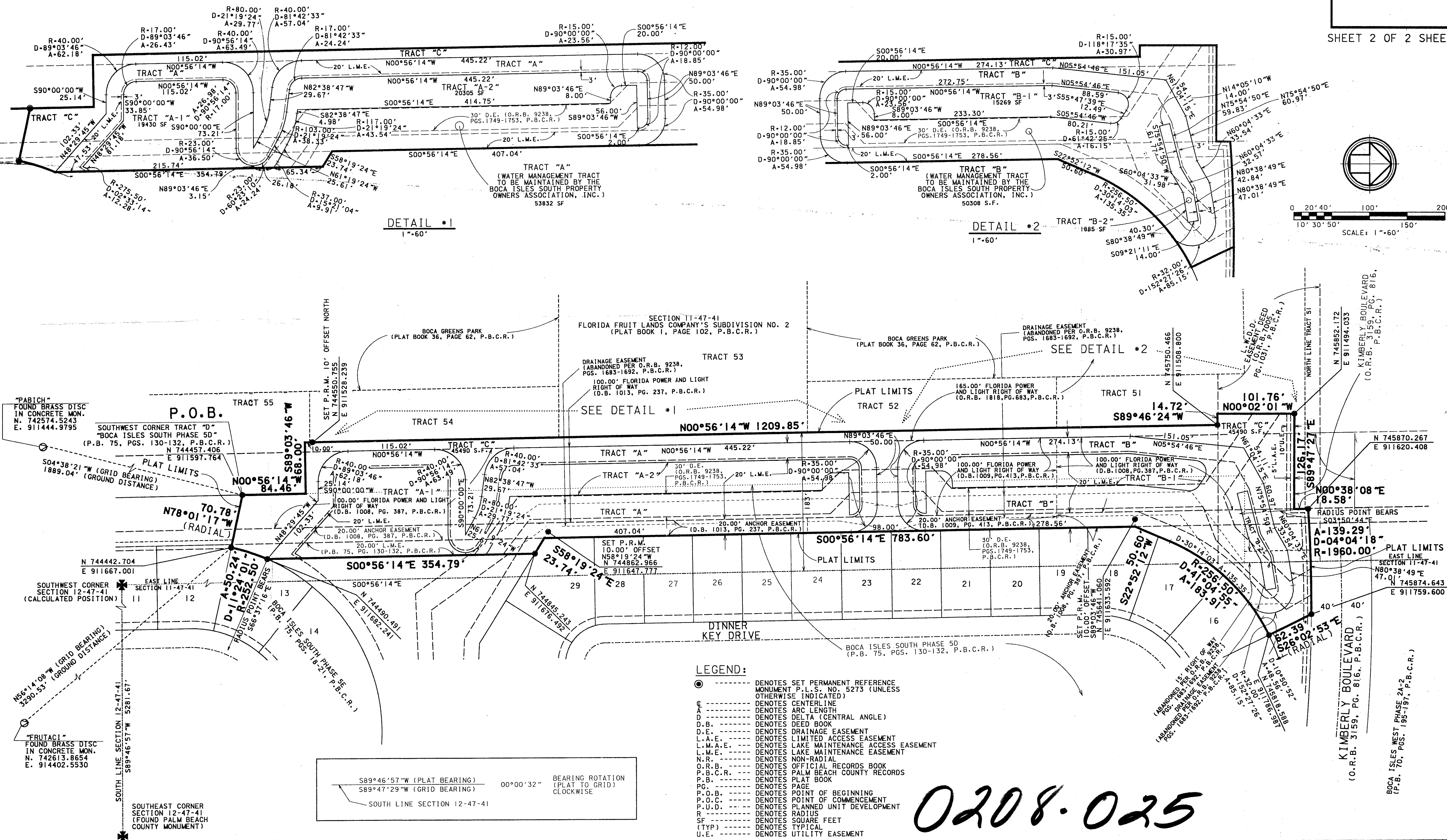
197

A REPLAT OF A PORTION OF TRACTS C AND D, "BOCA ISLES SOUTH PHASE 5D" (P.B. 75, PGS. 130-132, P.B.C.R.), TOGETHER WITH A REPLAT OF A PORTION OF TRACTS 51, 52, 53, 54 AND 55, SECTION 11, TOWNSHIP 47 SOUTH, RANGE 41 EAST, "FLORIDA FRUIT LANDS COMPANY'S SUBDIVISION NO. 2" (P.B. 1, PG. 102, P.B.C.R.), TOGETHER WITH A PORTION OF THE ABANDONED 15.00 FOOT ROAD RIGHT OF WAY (O.R.B. 9238, PGS. 1683-1692, P.B.C.R.) IN SECTIONS 11 AND 12, TOWNSHIP 47 SOUTH, RANGE 41 EAST.

PALM BEACH COUNTY, FLORIDA

PET. 77-13

SHEET 2 OF 2 SHEETS



SUBDIVISION: BOCA ISLES SOUTH PHASE 5G
 BOOK 78 PAGE 197
 FLOOD HAZARD MAP #1004
 ZONING RT5
 QUA # 68
 PC 77-13 ZIP CODE 33491
 BOCA ISLE SOUTH PHASE 5G

BOCA ISLES WEST PHASE 2A-2
 (P.B. 76, PGS. 195-197, P.B.C.R.)

KIMBERLY BOULEVARD
 (O.R.B. 3159, PG. 816, P.B.C.R.)

KIMBERLY BOULEVARD
 (O.R.B. 3159, PG. 816, P.B.C.R.)

"PABICH" FOUND BRASS DISC IN CONCRETE MON. N. 742574.5243 E. 911444.9795

SOUTHWEST CORNER SECTION 12-47-41 (CALCULATED POSITION)

SOUTHEAST CORNER SECTION 12-47-41 (FOUND PALM BEACH COUNTY MONUMENT)

S89°46'57"W (PLAT BEARING) 00°00'32" BEARING ROTATION (PLAT TO GRID) CLOCKWISE
 S89°47'29"W (GRID BEARING)

SOUTH LINE SECTION 12-47-41
 S89°46'57"W 5281.67'

SOUTH LINE SECTION 12-47-41
 S89°46'57"W 5281.67'

N 744442.704 E 911667.001

N 744457.406 E 911597.764

N 745870.267 E 911620.408

N 745874.643 E 911759.600

N 745870.267 E 911620.408

N 745870.267 E 911620.408

N 745870.267 E 911620.408

N 745870.267 E 911620.408

N 745870.267 E 911620.408

N 745870.267 E 911620.408

N 745870.267 E 911620.408

N 745870.267 E 911620.408

N 745870.267 E 911620.408

N 745870.267 E 911620.408

N 745870.267 E 911620.408

N 745870.267 E 911620.408

N 745870.267 E 911620.408

N 745870.267 E 911620.408

N 745870.267 E 911620.408

N 745870.267 E 911620.408

N 745870.267 E 911620.408

N 745870.267 E 911620.408

N 745870.267 E 911620.408

N 745870.267 E 911620.408

N 745870.267 E 911620.408

N 745870.267 E 911620.408

N 745870.267 E 911620.408

N 745870.267 E 911620.408

N 745870.267 E 911620.408

N 745870.267 E 911620.408

N 745870.267 E 911620.408

N 745870.267 E 911620.408

N 745870.267 E 911620.408

N 745870.267 E 911620.408

N 745870.267 E 911620.408

N 745870.267 E 911620.408